



# GAT MONTHLY MEMBERSHIP PROGRESS REPORT

Results as of: 11/30/2023

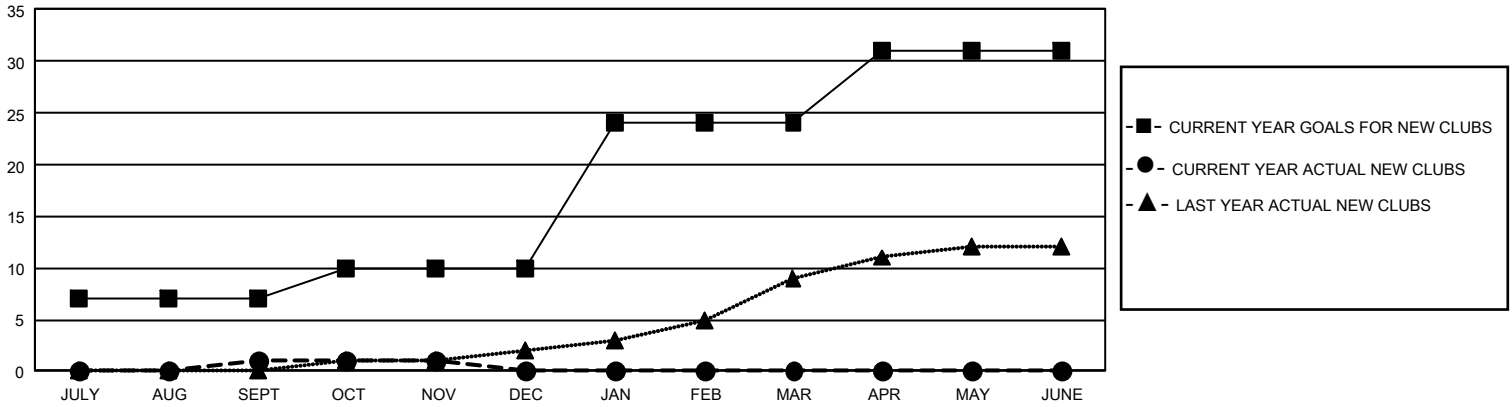
## GMT Constitutional Area 5 - J, Group G

REPORT DOES NOT INCLUDE CLUBS IN UNDISTRICTED AREAS.

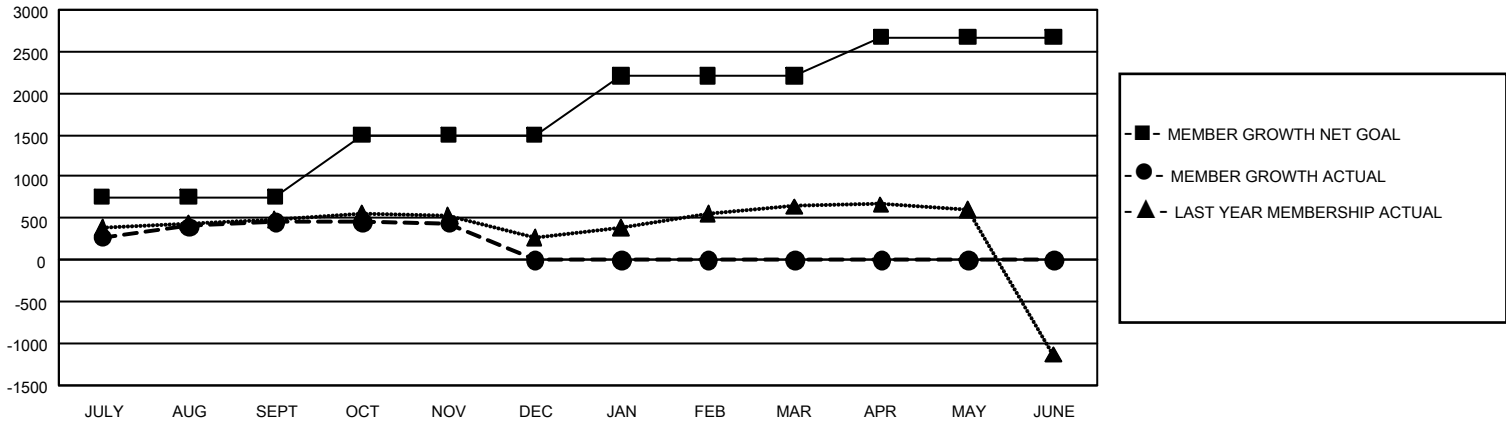
Clubs			
RESULTS FOR 2023-2024			
QUARTER	NEW CLUB GOAL	NEW CLUBS	DROPPED CLUBS
JULY/AUG/SEPT	21	1	0
OCT/NOV/DEC	9	0	0
JAN/FEB/MAR	42	0	0
APR/MAY/JUNE	21	0	0

Members			
RESULTS FOR 2023-2024			
QUARTER	MEMBER GROWTH NET GOAL	MEMBER GROWTH ACTUAL	DROPPED MEMBERS ACTUAL (including transfers)
JULY/AUG/SEPT	758	1,169	661
OCT/NOV/DEC	743	337	340
JAN/FEB/MAR	712	0	0
APR/MAY/JUNE	462	0	0

GOALS AND ACTUAL NEW CLUBS CUMULATIVE



GOALS AND ACTUAL MEMBERS CUMULATIVE



DROPPED CLUBS: 0	
<b>DROPPED MEMBERS</b>	
DECEASED	138
CLUB CANCELLED	0
OTHER	863
<b>TOTAL</b>	<b>1,001</b>

597 CLUBS OF 1,255 ADDED 1 OR MORE NEW MEMBERS

[CLICK HERE FOR CUMULATIVE MEMBERSHIP DATA](#)

GENDER DISTRIBUTION	
MALE	30,195 (76.53%)
FEMALE	9,260 (23.47%)
NON BINARY	0 (0.00%)
PREFER NOT TO ANSWER	2 (0.01%)
TOTAL FAMILY UNIT MEMBERS	12,439
FAMILY MEMBERS PAYING HALF DUES	7,017